

Prospectus

Education, events and exams

- Surgical
- Dental
- Pre-Hospital
- Sports Medicine
- Perioperative
- Surgical Trainers
- Dental Trainers

www.rcsed.ac.uk



THE ROYAL COLLEGE
OF SURGEONS OF
EDINBURGH

A place to feel

Welcomed

With over 500 years of education, assessment and advancement of surgery, we pride ourselves on our exacting standards and positive impact on patient outcomes and care. We have an experienced team of practitioners who deliver our courses, exams and professional development activities and have made a significant investment in educationalists and psychometricians within the College to ensure quality assurance of all activities.



Contents



Welcome	2
About the College	4
Membership benefits	6
Your surgical career	8
Our faculties	10
Your dental career	12
Events, courses and exams	18
Training and career development	28
CPD, research and grants	30
Our campus	34



What attracted me straight away to the Royal College of Surgeons of Edinburgh was that you immediately feel at home. When you come through the doors you enter into something historic, traditional but very progressive. You meet like-minded people in various environments and make friendships that last forever. It is like coming home to your family.

The College is an institution of education, training and expert outcomes and it has moved with the times. The great thing about our College is that it isn't just a UK College, it is an international College. It reaches out and provides support for education, teaching, safety and outcomes worldwide.

Professor S Michael Griffin OBE
RCSEd President and Consultant
Oesophagogastric Surgeon



Founded

in 1505

The Royal College of Surgeons of Edinburgh has been the professional home for surgery and dentistry for over 500 years. Throughout that time, we have never wavered from our commitment to advancing surgical excellence through education, training, examination and CPD.

In 1505, there was no separation between surgeons and barbers; a curious state of affairs that existed simply because both surgeons and barbers used sharp instruments. Following the introduction of The Seal of Cause, a charter which was laid down and ratified by King James IV, you were required to be part of the College if you were planning to pick up a knife and there were certain standards you had to meet.

With more than 26,000 members in over 100 countries today, our outlook and our reach are global, however it is our commitment and focus on delivering locally to our Fellows, Members and Affiliates that makes us more than just a Royal College of Surgeons.



Revered Reputation

Our reputation as a friendly and approachable College is one of the main reasons that we are the College of choice for professionals around the globe, as is our renowned reputation for excellence in examination and education standards.

Our College has been the professional home for surgery and dentistry for over 500 years. Throughout that time, we have never wavered from our commitment to advance surgical excellence through education, training, examination and CPD. Now in our sixth century, the College is proud of where we are and what we have achieved. RCSEd embraces the complete surgical team and beyond, with Faculties dedicated to the advancement and support of surgical trainers, perioperative practitioners, dentistry and dental trainers, pre-hospital care delivery, remote and rural healthcare, sport and exercise medicine and more.

The reputation of a good surgeon, dentist or healthcare professional is someone who delivers good outcomes for patients and that is what our College is all about. It is an institution of education, training and expert outcomes; one that is far from static. We are not content to merely move with the times, but to set the pace for our profession internationally.

Ultimately, what cements our reputation is our resolute focus on patient care and patient outcomes. The College exists because we put patient's welfare front and centre, and that makes it a better environment for all our Fellows, Members and Affiliates.



Internationally Renowned

Our College has always had a tradition of attracting international Fellows and Members. We are one of the largest surgical colleges in the world, with membership in excess of 26,000, stretching across more than 100 countries.

From Australia to Trinidad, year-by-year, our international activity continues to grow. We host approximately 100 exams in over 70 locations across the world for both surgeons and dentists. The College is committed to developing and delivering new international opportunities and support for our international markets, through a combination of online and locally delivered courses and activities. Our RCSEd International Surgical Adviser Network offers support for surgeons and dental professionals throughout their training and careers.

The College takes great pride in the friendly and positive relationships we have developed with our partner colleges and organisations around the world. Beyond our Edinburgh headquarters and our Birmingham Regional Centre in the UK, RCSEd is proud to have established an international office in Kuala Lumpur, Malaysia to serve our growing memberships in the ASEAN region. We are also pleased, through our International Medical Graduate Sponsorship Scheme, to be able to offer support to international trainees hoping to take up training opportunities within the UK.

Whether you are part of the College based in Argentina or Zimbabwe, the Edinburgh College is proud to be the professional home for you.



Our College is more than just a national college, it's an international college. It reaches out across the continents to provide support for education and for teaching. I think that it's absolutely essential in this present world of globalisation that we look after those who do not have the same educational opportunities that we have here in the United Kingdom.

Professor Pala Rajesh
RCSEd Vice President, Consultant Cardiothoracic Surgeon



Fully Supported



I think the College is very good at supporting people in their day-to-day life as a clinician and one of the campaigns the College has launched recently – the anti-bullying campaign #LetsRemoveIt – really shows that the College is listening to the voices of the surgical community.

Alice Hartley
Urology Trainee, Hunter Doig Medal winner, 2018 and
RCSEd #LetsRemoveIt campaign lead

By becoming a Fellow, Member or Affiliate of the College, you are welcomed into an organisation renowned for its friendliness and approachability, and you are supported - both professionally and respectfully - throughout your career.

From undergraduate to consultant level, we offer our membership a range of support networks. Our Affiliate Network supports undergraduates at the start of their journey towards a surgical or dental career, while our Trainees' Committee ensures the views of our trainees are heard in all aspects of College activity at a senior level. For more senior trainees and new consultants, our Younger Fellows' Group offers an avenue of support as you transition into this challenging, new phase of your career.

Our growing and extensive Regional and International Adviser Networks comprise esteemed surgical and dental RCSEd Fellows from across the UK and the globe. They ensure we achieve our mission to support and deliver to our membership locally, by

playing a key role in offering professional support and guidance, as well as to act as a conduit of information on College activities and initiatives.

Your experience when you visit our Edinburgh headquarters, whether to sit an examination or attend a course or conference, will be first class. As well as the historic rooms of our Playfair Building, our facilities also include several conference venues and our state-of-the-art Surgical Skills Laboratory, while our award-winning Ten Hill Place Hotel and Wine Bar, based at the College campus, promises you a luxurious place for rest and relaxation for the duration of your stay.

Membership benefits

Guide



- Opportunities to get involved with the RCSEd in key roles such as examiners, educational faculty and convenors, Regional Surgical Advisers and Council Members
- Free annual subscription for successful applicants to the Faculty of Surgical Trainers

Discover



- Networking opportunities
- Discounted rates on relevant courses and events
- Access to members area with growing e-learning portfolio (including lectures, webinars and Acland's Video Atlas of Human Anatomy)
- Access to thousands of electronic journals via the NHS Scotland Knowledge Network
- 40 convenient and accessible exam centres in UK and around the world
- Part time distance learning suite of ChMs, covering four specialties – and designed for pre-FRCS trainees approaching consultancy
- Regular news digest, e-bulletins, newsletters and quarterly editions of the award-winning membership magazine Surgeons' News, to which you can contribute
- Range of discounts at our hotel, food outlets and events services
- Online discounts for medical publishers including Oxford University Press, Wiley-Blackwell, Quintessence Publishing and Elsevier

Lead



- Regional seminars and forums on professional issues
- Six editions per year of the peer-reviewed journal The Surgeon
- Reduced Fellowship subscription rate for everyone entering their first full year as a College Fellow

Support



- Professional support and advice from Regional Surgical Advisers
- Pro-rata reductions for maternity/paternity leave
- Support for research through our bursaries, fellowships and grants
- Full current and historical information services via our extensive library and archive resources, including a growing e-book platform
- Representation via our Trainees' Committee and Trainee Representative on Council
- Younger Fellows' Group for those making the transition from trainee to consultant, offering tailored seminars and regional events
- Certificate of affiliation for your portfolio

Cutting Edge Education



By gaining qualifications, clinical skills, leadership and management experience, and research skills you will acquire the competencies required to progress through surgical training or meet revalidation or CPD requirements. Our comprehensive range of CPD approved clinical and non-clinical skills courses and symposia, membership and specialty fellowship examinations, and professional support opportunities are designed to help you achieve these vital competencies at all stages of your career.

The College offers membership options for foundation year doctors; core surgical trainees; specialty trainees; consultant surgeons; staff and Associate Specialists (SAS) and international surgeons.

Postgraduate Programmes

Run in partnership with the University of Edinburgh, the Edinburgh Surgery Online (ESO) suite of postgraduate eLearning programmes offer a range of options for surgeons in the various stages of their training.

Edinburgh Surgery Online (MSc)

As a trainee starting out on your surgical career, you will need to turn your attention to the demands of sitting the Membership of the Royal College of Surgeons (MRCS) examination and competing for surgical training posts.

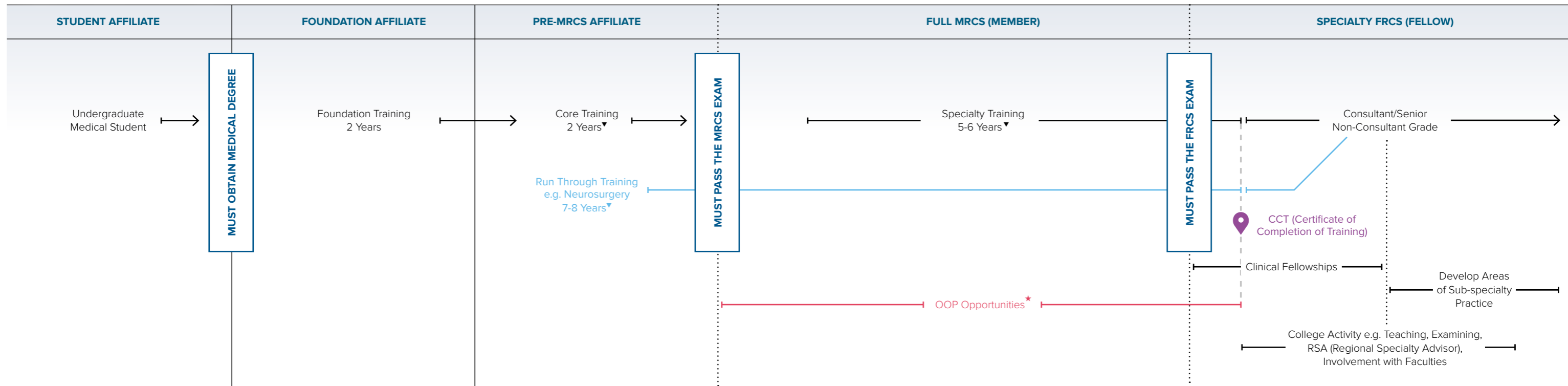
This unique programme helps you work towards passing your MRCS exam and gain a highly regarded MSc in Surgical Sciences. The first two years follow the UK intercollegiate surgical curriculum and prepare students for the MRCS exam. The third and final year allows the student to undertake a research project that can be focused on your own specialist surgical area of interest and leads to an MSc in Surgical Sciences.

Edinburgh Surgery Online (ChM)

These programmes are based on the UK intercollegiate surgical curriculum and provide the opportunity for trainees to select those advanced modules relevant to their declared subspecialty, and supports learning for the Fellowship of the Royal College of Surgeons (FRCS) examinations.

There are currently five specialty specific ChM programmes for general surgery, urology, trauma and orthopaedics, vascular and endovascular, and clinical ophthalmology.

Surgical Career Pathways



Academic Career Pathways include research, clinical and educational training. These are varied and can include structured routes such as NIHR or SCREDS programmes.

Less-than-full-time (LTFT) is available at all points along the surgical career pathway

* OOP R - Research
OOP E - Experience
OOP T - Training
OOP C - Career Break

▼ Indicative years

RCSEd Faculties

Our College has seven active Faculties which cover the broad spectrum of surgical, dental and other medical practice. We are one of the largest surgical colleges in the world, with membership in excess of 26,000, stretching across more than 100 countries.

Faculty of Dental Surgery



The College's Faculty of Dental Surgery (FDS) promotes excellence in patient care by providing quality-assured assessments and facilitating high standards of education for members of the dental profession.

Established in 1982, it is the largest of the College's Faculties with over 6,000 Fellows and Members worldwide and its own Council. The Dental Faculty's portfolio includes a wide range of exams and courses held in 17 countries around the world.

Main exams throughout the year include the MFDS, a range of specialty membership exams in endodontics, orthodontics, periodontology, prosthodontics and advanced dental surgery, as well as a range of exams for dental care practitioners. The Faculty works with its sister Colleges in London and Glasgow in delivering the Tri-Collegiate Specialty Membership Examinations in Oral Surgery, Paediatric Dentistry and Special Care Dentistry.

Faculty of Dental Trainers



The Faculty of Dental Trainers (FDT) is also the first of its kind in the UK and is inclusive of all members of the dental team. It promotes the role of trainers in dentistry, recognises achievement and excellence and, by the upholding of its Standards, enhances the quality of patient care.

Dentists and dental care professionals form the teams that deliver patient care across all sectors and in multiple settings, including public and community services, general and private practice, hospital services, universities and the armed services.

To achieve the best outcomes for patients and to ensure safe patient care, it is essential that all training for the dental team is effective, competent and delivered to the best possible standards. To achieve its purpose of improving the quality of patient care, the FDT:

- *Rewards interest, engagement and achievement in dental training*
- *Provides a professional home for recognised dental trainers*
- *Offers support and guidance for career development in dental training*
- *Promotes standards in training*

The FDT was launched in September 2016 and sits alongside the Faculty of Surgical Trainers. Whilst both of these Faculties are ultimately accountable to the RCSEd's governing Council, the Faculty of Dental Trainers reports to the Council of RCSEd's Faculty of Dental Surgery.

The Faculty of Surgical Trainers (FST)



The Faculty of Surgical Trainers is open to all those who have an active interest or involvement in surgical training in the UK and internationally, regardless of College affiliation.

The Faculty is the first of its kind in the UK and its purpose is to help support and develop surgeons in their role as surgical trainers. It works to increase the profile and recognition of surgical education and training and to disseminate the message that excellent surgical training means excellent and safer patient care.

It champions and promotes training in non-technical skills, as well as traditional technical skills, to further enhance patient safety and provide a framework for the training and education of surgical trainers.

The Faculty is playing an increasingly important role within the landscape of surgical training, both within the UK and internationally. Recent and on-going activities include: the creation of a set of Standards for Surgical Trainers that have been adopted as the UK standard and are now generating international interest; developing a Trainer's Manifesto to support further professionalisation of the role of the surgical trainer; and hosting the International Conference on Surgical Education and Training (ICOSSET) in March 2019.

Faculty of Perioperative Care



The College established the Faculty of Perioperative Care in recognition of the evolving and increasingly important role that surgical care practitioners (SCPs) and surgical first assistants (SFAs) play as part of the wider surgical team in delivering safe surgical care to patients.

The Faculty membership is available to all perioperative practitioners, including trainees, such as: surgical care practitioners; surgical first assistants; and all those with similar titles involved in the delivery of high quality surgical care.

The Faculty has continued to flourish since its creation in 2016 with significant milestones including: the confirmation of its first full Member in November 2017; the establishment and on-going development of a range of bespoke education courses; as well as an increasingly popular Faculty annual conference; the development and expansion of key partnerships with universities; and the award of our first Fellowship in July 2018.

Faculty of Pre-Hospital Care



Pre-hospital care is a well-established branch of medicine, now practised by a broad range of practitioners from first aiders, paramedics, doctors, nurses, first responders, voluntary aid workers and remote medics including multi agency teams such as police, fire and armed forces.

As the face of pre-hospital emergency medicine changes, the Faculty's aim is to set and maintain clinical standards for all practitioners in this evolving speciality.

The Faculty has updated its strategic objectives and mission statement in response to these changes, it has also developed its committee structure to ensure that its work is strategically aligned to the objectives.

Faculty of Sport and Exercise Medicine



The College houses the intercollegiate Faculty of Sport and Exercise Medicine and administers examinations on its behalf. FSEM works to develop and promote the medical speciality of sport and exercise medicine (SEM).

SEM involves the medical care of injury and illness in sport and exercise and has a large scale application in improving the health of the general public through musculoskeletal medicine, exercise advice and prescription.

The speciality has a very broad application with SEM practitioners working in multidisciplinary teams (MTD) in a variety of settings across primary, secondary and tertiary care including:

- Musculoskeletal and SEM clinics
- Exercise prescription GP and specialist level
- SEM rehabilitation
- Workplace wellness
- Sport medicine and team care

Faculty of Remote and Rural Healthcare



The Faculty of Remote and Rural Healthcare's (FRRH) vision is that everyone has access to great healthcare, regardless of location and that human ingenuity is capable of achieving the vision of this universal right. The establishment of the FRRH recognises that there is a global need for an institutional body, willing and able to set and maintain the highest standards of practitioner excellence.

This new Faculty, launched in 2018, will establish, promote and train using new standards for rural and remote healthcare practitioners. In collaboration with its partners, which include industry and academia, its aim is to intentionally drive towards equitable, economically-viable access to integrated healthcare – and thereby improve significantly the health and medical outcomes of people living and working in remote and rural areas of the world.



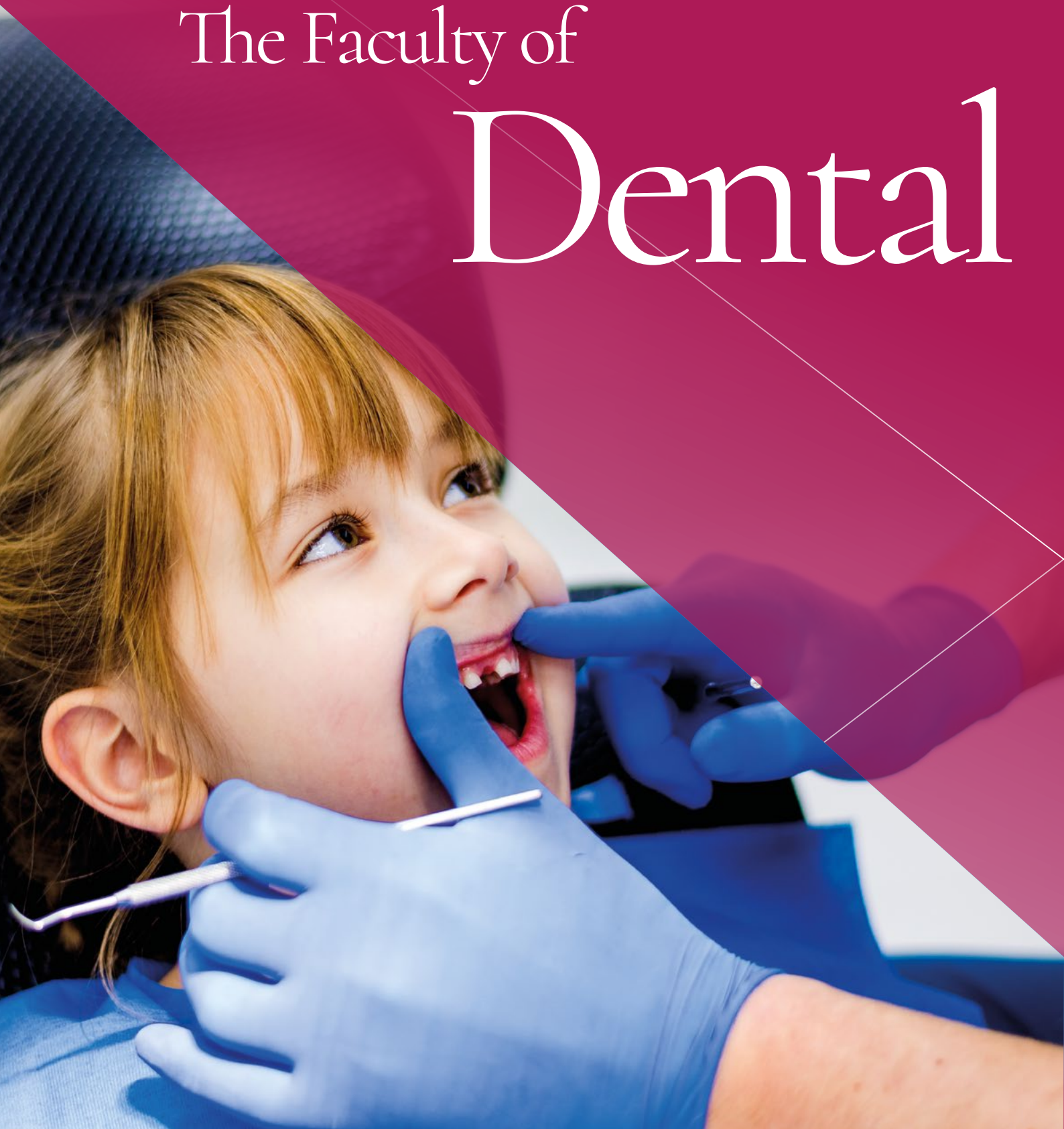
I am immensely proud of being the first to be awarded membership of the Faculty of Perioperative Care, and I know from speaking to the wider perioperative community that there is real excitement to apply for membership.

John Stirling,
NORS Workforce Transformation Project Lead
at NHS Blood and Transplant



The Faculty of

Dental





Surgery

Our Faculty of Dental Surgery (FDS) delivers high quality assessment, education and continuing professional development that adds value to the professional development and engagement of you as trainees and membership worldwide. By promoting excellence in clinical practice and dental training we can also support and develop you to reach your full potential.

The Faculty has grown in recent years supporting 6,500 Associates, affiliates, members and fellows and 110 examination diets are delivered across the world to suit all members of a dental team, be it in the United Kingdom or internationally.

On completion of any one of our examinations you can be confident that your achievements are recognised by a leading organisation internationally renowned in assessment and delivered by experienced trained examiners who bring regional knowledge to the examinations.

The Dental Skills Competition, open to all UK and Irish final year students, is one of the most exciting ways to join the College. By competing you have a real chance to gain supported access to a life-long membership of RCSEd.

The career pathways on pages 16-17 outline the main progression routes to develop your career in all spheres of dental practice, with RCSEd there to support you throughout your entire working life.

A notable Faculty development is the Membership in Advanced General Dental Surgery (MAGDS) specifically designed to support you as general dental surgeon to attain recognition of your clinical practice especially clinical judgement and problem-solving skills at a higher level that is aligned to the [NHS England](#) documents for commissioning specialist dentistry at Level 2.

The Faculty recognises the need for modern online educational material to support your knowledge attainment and continuing professional development throughout your career. A further exciting and innovative one-year online programme leading to the Diploma in Paediatric Dentistry (Dip Paed Dent (DT) RCSEd) for dental therapists and graduates in oral health sciences is now available. It is the first of its kind to be offered to you by a Royal College.

Dental Affiliate Network

As well as being a valuable addition to your CV, affiliating to the Student, Pre-Membership or Dental Care Professionals' Network gives you access to numerous benefits.

We understand that while you are studying, embarking on your training or working towards your MFDS or specialty membership examinations, you will need to be supported by the College. The Affiliate Network will provide you with the professional guidance that you need during these critical times.



Benefits for all Categories of the Dental Affiliate Network

Guide



- Opportunities to get involved with the Faculty of Dental Surgery in key roles such as examiners, educational faculty and convenors; Regional and International Dental Ambassadors and Council Members
- Free annual subscription for successful applicants to the Faculty of Dental Trainers, for existing Members and Fellows of the RCSEd
- Range of discounts at our hotel, food outlets and events services
- Discounted rates on relevant courses and events
- Access to a growing e-learning portfolio (including lectures, webinars and Acland's Video Atlas of Human Anatomy)

Discover



- Networking opportunities
- Online discounts for medical publishers including Oxford University Press, Wiley-Blackwell, Quintessence Publishing and Elsevier
- Access to thousands of electronic journals via the NHS Scotland Knowledge Network
- Full current and historical information services via our extensive library and archive resources, including a growing e-book platform
- 38 convenient and accessible exam centres in the UK and around the world
- Regular news digest, e-bulletins, newsletters and quarterly editions of the award-winning Surgeons' News, to which you can contribute

Lead



- Membership of a Faculty that is committed to supporting the professional and career development of the whole dental team, at all levels
- First Royal College to offer a Membership in Advanced General Dental Surgery (MAGDS)

Support



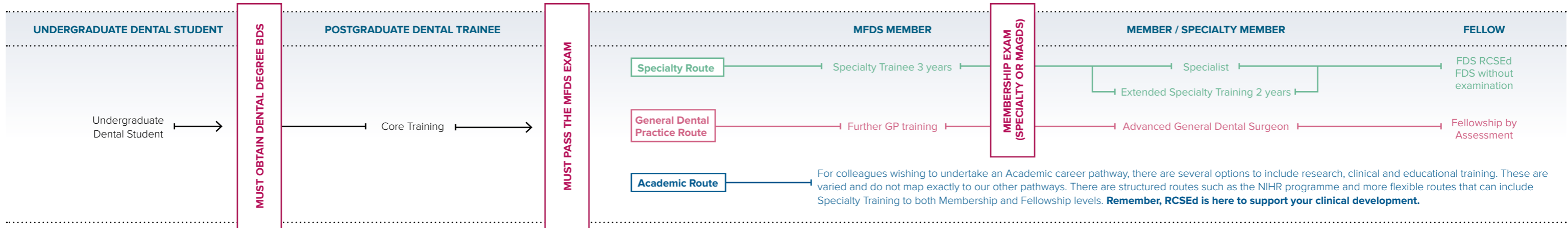
- Professional support and advice from Regional and International Dental Ambassadors
- Pro-rata reductions for maternity/paternity leave
- Support for research through our bursaries, fellowships and grants



RCSEd is here to support you throughout your working life, supporting and developing you to reach your full potential.



Dental Career Pathways



The Faculty of Dental Surgery at RCSEd is here to support your career development, no matter which route you choose. You will see that there are several options and there is now more flexibility than ever to change course and widen your development opportunities. Be part of our vision to support patient safety, through excellence and professional standards. Remember, RCSEd is with you every step of the way!



I graduated in 2014 having taken part in the first Dental Clinical Skills Competition and completed Dental Foundation Training the following year. That year, I had the opportunity to attend the Midwinter Meeting in Chicago, an amazing experience. I now work as an Academic Clinical Fellow in Oral Pathology, which I really enjoy. I completed the MFDS exam and am now a member of RCSEd, an invaluable aid to my career. More recently, I was awarded the first Faculty of Dental Surgery Grant for Education. This enabled me to complete a teaching qualification, again, this has been enormously beneficial in my current role.



I am a practising GDP and have followed the RCSEd pathway from MFDS, through MPDC and onto Fellowship. This pathway allows GDPs to demonstrate and validate a level of advanced expertise through a pathway historically reserved for specialists. As well as being a GDP, I have now expanded my roles and interests to include being a clinical teacher and MAGDS examiner. I would recommend being part of RCSEd to any dentist working in general dental practice.



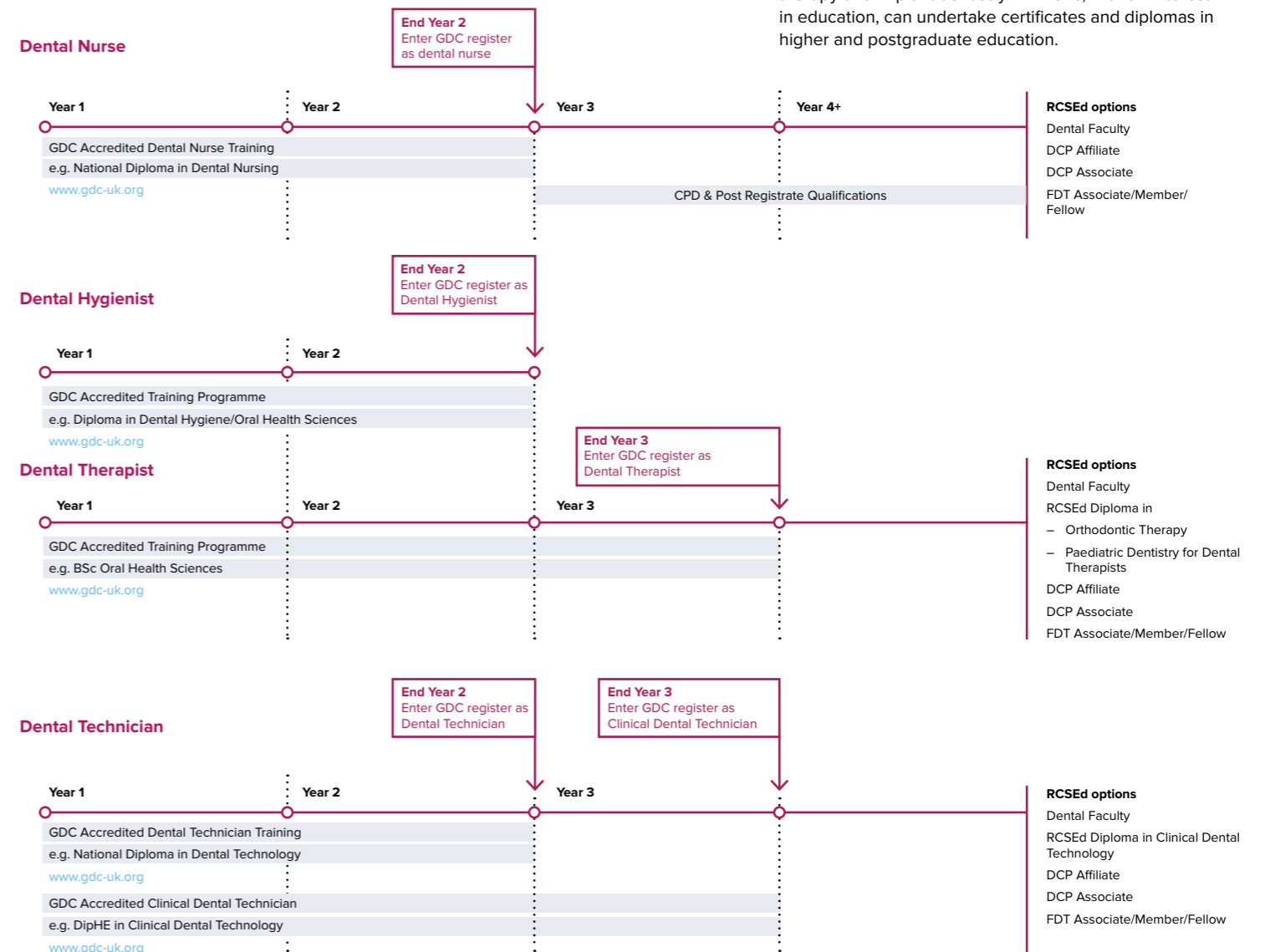
Hannah Crane



Andrew Gemmell

Explore our Dental Care Practitioner career pathways

More advanced training for DCPs is available and will suit a variety of interests. For example, for dental nurses there are treatment specific certificates and diplomas in subjects such as dental health education, dental radiography, sedation, implant nursing and orthodontic nursing. Hygiene therapists have the potential to undertake diplomas in paediatric dentistry, orthodontic therapy and implant dentistry. All DCPs, with an interest in education, can undertake certificates and diplomas in higher and postgraduate education.



Our Events, Courses and Exams



Surgical Events



MRCS Lecture

The MRCS lecture is designed to provide an insight into the examination with a particular focus on the Part B OSCE; the purpose and format of the exam, the broad content areas, domains, how the exam is assessed and marked and an insight from the perspective of an Intercollegiate MRCS Examiner. Delegates will receive a certificate of attendance.

Student Surgical Skills Competition

Gives aspiring surgeons in their final year of UK medical school an opportunity to practise and compete in surgical challenges against their peers from across the UK. Having successfully run the competition since 2011, the College in collaboration with Medtronic, hosts annual regional heats for the competition in the autumn throughout the UK.

RCSEd Annual Audit and QI Symposium

This event runs to allow trainees at all levels, the opportunity to attend and present their audit and QI work. We therefore invite trainees to submit their abstracts for consideration for presentation at this event.

Surgical Careers Roadshow

Attendees will be given the opportunity to speak with representatives from each of the surgical specialties on any aspect of pursuing a career in surgery. This is an ideal occasion to speak freely and informally with surgeons who have already navigated the surgical career pathway and who can advise you on topics such as how to develop your portfolio, career progression, training structures and provide answers to specialty specific questions. There will also be some practical sessions available.



Surgical Courses

The Edinburgh MOCK MRCS OSCE Preparation Course

This course is aimed at FY2 and above, and primarily those preparing for the Intercollegiate Part B MRCS examination. It is designed to help improve candidates' performance in the MRCS Part B examination via practice sessions with mock MRCS OSCE stations and discussions with examiners on the pitfalls and problems commonly encountered with the examination process. The course structure includes short lectures, discussion groups and OSCE stations.

Basic Surgical Skills

Aimed at foundation year 2 (FY2) and specialist trainees (ST1 & ST2) interested in pursuing a career in surgery, this course is designed to introduce core surgical skills at the very start of a surgeon's training by teaching correct basic technique, which may not specifically have been covered during their foundation or core training placements. The course is held over two days with a series of demonstrations and extensive hands-on sessions. Techniques are practiced using a combination of prepared animal tissue, synthetic models and simulation. On completion of this two-day course, participants should be able to demonstrate a wide range of surgical disciplines, from handling instruments and to undertaking course biopsy, wound management and drainage techniques.

Advanced Trauma Life Support (ATLS®)

This highly interactive course, combines lectures, discussions, interactive tutorials, skills teaching and simulated patient management scenarios (moulage). Participants complete a pre-course MCQ and are assessed throughout the course. The programme provides systematic and concise training for the early care of trauma patients. Recommended during first or second year of specialist training (ST1-2).

Series Surgical Anatomy of the Limbs: A Study Day (MRCS Level- Wade)

This course is part of a series of three courses, designed to provide a comprehensive review of the important surgical anatomy of the limbs, from both a theoretical and a practical perspective.

Surgical Anatomy of the Trunk: A Study Day (MRCS Level - Wade)

This course is designed to provide a comprehensive review of the important surgical anatomy of the trunk from both a theoretical and a practical perspective. It is designed for trainees at an early stage of preparation for the MRCS and clinical medical students are also welcome to attend.

Visit www.rcsed.ac.uk for full and up-to-date booking details



Surgical Anatomy of the Head and Neck: A Study Day (MRCS Level - Wade)

This course is designed to provide a comprehensive review of the important surgical anatomy of the head and neck from both a theoretical and a practical perspective. It is designed for trainees at an early stage of preparation for the MRCS and clinical medical students.

Edinburgh Head and Neck Course

This course is delivered in two modules and run over five days. Module I provides the underpinning knowledge base and practical instruction in resection techniques on head and neck surgery, and runs over two days. Module II covers head and neck reconstruction, and runs over three days. Both modules are largely hands-on with participants working in pairs on Genelyn cadavers with supervision from an expert consultant faculty, in a simulated environment. The modules can be booked as standalone, or if registering for both, a discount is available. Aimed at trainees and newly appointed consultants in oral and maxillofacial surgery, otolaryngology/ENT surgery and plastic surgery.

Future Surgeons: Key Skills

This one-day course was designed to address the lack of structured basic surgical skills training courses for medical students intending to follow a career in surgery. It introduces participants to safe basic surgical techniques that are common to all surgical practices. This is a practical course with a high tutor to participant ratio. It is delivered using a series of tutor demonstrations and hands-on sessions where participants work on animal tissue. Tuition and supervision is provided throughout by expert surgeons. Aimed at medical students and FY1s. (Attendance at this course will give you the opportunity to apply for a one-year free Affiliate Membership with the College).



Non-Technical Skills for Surgeons (NOTSS)

This is a one-day course for consultant surgeons and post CCT trainees from all surgical specialties. It examines the non-technical skills which underpin good operative performance using short talks, video simulated scenarios, an audience response voting system and small group discussions. At the end of the course participants will be able to understand the theories and research relating to adverse events in surgery and the importance of the non-technical skills in improving performance. They will also be able to use the NOTSS taxonomy to observe, rate, and provide feedback on behaviours in the operating room.

Training the Trainers: Trainer Development Course

This course is designed to meet the day-to-day needs of educational supervisors, clinical supervisors and trainers in the UK and builds on the success of the previous Training the Trainers courses.

Radiology for Surgeons

An interactive course that will enable the participants to have a greater understanding of radiological investigations, imaging types and interventions. Radiological safety, complex plain film interpretation and cross-sectional imaging case studies will be covered.

RCSEd Cadaveric Intermediate Open Abdominal Surgery Course

This course will provide a comprehensive and condensed learning experience to compensate for the progressive reduction in the time spent by trainees in theatre as well as the decrease in the numbers of open procedures in general surgery. Senior medical students (4th, 5th & 6th Year) interested in a career in surgery can attend as observers. Please note you are welcome to attend both days for £30.

RCSEd Cadaveric Major Open Abdominal Surgery Course

This course will provide a comprehensive and condensed learning experience to compensate for the progressive reduction in the time spent by trainees in theatre as well as the decrease in the numbers of open procedures in general surgery. Senior medical students (4th, 5th & 6th Year) interested in a career in surgery can attend as observers and you are welcome to attend both days for £30.

Core Skills in Vascular Surgery

This one-day course will teach junior surgical trainees fundamental knowledge of vascular emergencies and investigations, as well as basic vascular suturing skills irrespective of their specialty. Through lectures, interactive discussion and practical skills stations, participants should be able to assess vascular emergencies, interpret vascular investigations and formulate possible treatment options, perform end-to-end, end-to-side anastomosis, as well as vein patch and embolectomy.

Surgical Courses (continued)



The Edinburgh Hand Course

This three-day course prepares senior trainees (ST3-6) in orthopaedic and plastic surgery for the hand surgery section of their final examination. The entire hand syllabus is covered on a theoretical basis by means of lectures and there is extensive practice in clinical and viva examination. The course is also open to more junior surgical trainees, to provide a broad background from which to consolidate knowledge of hand surgery.

Plastering Techniques for Fracture Treatment

This practical one-day course is aimed at trainees with an interest in orthopaedics or accident and emergency medicine. This course is specifically targeted to FY1, FY2, CT1, CT2 and SpR1 levels. Medical students and allied professionals welcome. Participants will be taught and advised by experienced orthopaedic clinicians and plaster technicians. After the course you will have learned the fundamental principles of plaster application and know what pitfalls to avoid to prevent complications of non-operative fracture care with plaster immobilisation.

Scottish Surgical Boot Camp

These Surgical Boot Camps are a joint collaboration of NHS Highland, The Royal College of Surgeons of Edinburgh and The Royal College of Physicians and Surgeons of Glasgow. They define and accelerate the acquisition of key technical and non-technical skills at the start of a surgical career, hence they are the recommended introductory course for both of the Scottish Core Surgical Training Programmes. Places are available for FY2/ST1/CT1 applicants from other surgical programmes, and from other parts of the UK and abroad but booking priority will be given to Scottish CT1 (IST) trainees and others may have to wait on a reserve list.

Core Skills in Urology Course (Modules 1 and 2)

This two-day course aimed at CT2-ST4 level trainees uses lectures, tutorial discussion groups and practical sessions with a variety of hands on models. The course provides junior urology trainees with hands-on practical training in basic endoscopic urological surgery offering the opportunity for practice that will augment local training programmes.

Core Skills in Urology Course (Modules 3 and 4)

This two-day course aimed at CT2-ST4 level trainees uses lectures, tutorial discussion groups and practical sessions with a variety of hands on models. The course aims to provide junior urology trainees with hands on practical training in basic peno-scrotal surgery, and introduce them to urodynamics and renal and prostate ultrasound offering the opportunity for practice that will augment local training programmes.

Core Skills in Orthopaedic Surgery

This course helps participants develop competence in procedures commonly carried out by junior orthopaedic trainees in the emergency department, outpatients and the operating theatre. It is aimed at FY2s interested in orthopaedics, core trainees and ST1-ST2 level. Delegates attending this course will receive a copy of McRae's Orthopaedic Trauma book prior to attending the course.

Interview Skills for Core Surgical Training

This one-day course prepares foundation trainees (and medical students), who are considering a career in surgery, for the core surgical training interviews. With fierce competition for core surgical training places, participants can benefit from gaining insight into the interview process, the opportunity to practice their interview skills, and from the feedback on interview performance from senior surgeons. This course is aimed at foundation trainees and final year medical students.

Care of the Critically Ill Surgical Patient (CCrISP)

This course, primarily aimed at CT2/ST2 level, provides instruction in the practical management of critically ill surgical patients of all types. The course emphasises a systematic approach to the assessment and management of these patients and their problems which, if used in conjunction with clinical expertise and appropriate attention to clinical detail, should ultimately help prevent the development of serious complications and multiple organ failure. The course is delivered by lectures, practical/active workshops and group discussion.

Foundation of Clinical Surgery

This is a two-day course with interactive presentations, providing a systematic and structured introduction to history taking and clinical examination. The course is designed to help develop participants' history taking and clinical examination skills and further their understanding of surgical disorders in the context of basic sciences and mechanism of disease and is aimed at medical students.

Foundation of Gastrointestinal Surgery

This course has been developed to address an area of knowledge and non-technical skills that is not currently covered in undergraduate teaching curriculums as well as in early years of training. This is a new two-day course with interactive discussion of common GI conditions in the context of applied basic sciences, basic explanation and videos of relevant surgical procedures, followed by MCQ style questions after each topic. There will be a small group practice on case scenarios to stimulate problem based learning and interactive discussion with peers followed by feedback from the tutor. There will be an interactive virtual clinical case which includes choosing the appropriate treatment option in a complex scenario.



Future Surgeons: Critical Care

This one-day course, aims to provide participants with a pragmatic approach to solve common clinical problems of all types of surgical patient. This course is aimed at foundation trainees.

Facial Aesthetic Surgery: Dissection Course for Surgeons

This two-day course with short presentations and hands-on dissection sessions, was designed to increase understanding of the principles of aesthetic assessment of the face and to teach contemporary dissection techniques for face lift, neck lift, brow lift, blepharoplasty, rhinoplasty and otoplasty. The course was originally targeted at ST4 and ST5 trainees in ENT, Plastics and OMFS with limited experience in this area but has also proved popular with established surgeons from a range of specialties.

Trans-anal Endoscopic Microsurgery Course (TEMS)

This three-day TEM course is a unique combination of a practical hands-on course aimed at providing delegates with the technical skills to perform TEM surgery and observed real-time operating in the Edinburgh Colorectal Unit. The assembled faculty includes consultants with a vast experience in rectal and TEM surgery supported by Frau Maillaender, specialist tutor for TEM from the University of Tuebingen.

We will discuss and impart the skills required to treat both early rectal cancer and large rectal adenomas by a minimally invasive approach. The course is strongly supported by Richard Wolf UK Ltd who will provide eight TEM stations for eight delegates to allow TEM operating on realistic surgical models under the guidance of sizeable faculty ensuring close supervision and mentoring.

Complete Ear Surgery

This two-day course is a combination of short lectures and practical hands-on sessions using cadaveric material aimed at senior trainees and consultants in otolaryngology. The course will offer the unique opportunity to learn and perform the following soft tissue techniques: island and butterfly graft tympanoplasty, pinnaplasty, mid temporal flap, temporoparietal flap, modified radical mastoidectomy and obliteration, conchomeatoplasty techniques and blind sac closure with middle ear implant. This course is designed to enable the participants to go through each procedure step-by-step and perform them on fresh frozen cadaveric heads. Each procedure will be introduced with a 15 minute step-by step lecture followed by an opportunity to perform the procedure on fresh frozen cadaveric heads under the supervision of experts in the field.

Edinburgh Hands on Balance Course

This course will provide up-to-date management of balance disorders through a combination of short didactic lectures and small group workshops. Topics include: when to request and how to perform vestibular function tests such as VEMPs, VHit, calorics and rotating chair, management of recurrent, BPPV, vestibular migraine, menieres disease, chronic subjective dizziness, superior semi-circular canal dehiscence and mal de debarquement.

Surgical Approaches to the Spine

Spinal surgery – a subspecialty of neurosurgery and orthopaedic surgery – requires a good knowledge of anatomy and an understanding of the relationship of various structures related to the spine. Safety is of utmost priority in spinal surgery and to maintain safety throughout the operative procedure, an in-depth knowledge of the anatomy is essential.

Aimed at ST4-ST8 neurosurgical and orthopaedic trainees, spinal fellows and junior consultants (years 1-3), this cadaver course studies the anatomy of approaches, and additionally spinal instrumentation, which should be an integral part of the training. Currently there are no courses in the UK that cater to this need. The highly popular and well regarded Approaches to the Cranial Components course is where this course draws inspiration, following regular feedback from delegates for the need to have a course dedicated to the spine.

Definitive Surgical Trauma Skills (DSTS)

This practical two-day course teaches participants how to make life-saving surgical decisions and perform under pressure in a trauma and emergency environment. You will learn about decision-making, epidemiology and emerging technologies, and cover the essentials of the relevant surgical anatomy.

This course is suitable for ST5-8, consultants and SAS grades. Participants should have a good understanding of ATLS and critical care principles and experience of managing trauma both frequently and infrequently.

Basic Microsurgical Skills

This one-day practical course is to provide delegates with an introduction to skills in microsurgery and its applications, including practical skills in basic microsurgical technique and arterial and venous anastomosis. Candidates will be formally assessed throughout the course with a competition and prizes in the final session.

Basic Skills in Paediatric Surgery

This one-day course helps paediatric trainees consolidate the basic surgical skills of knot-tying by hand and instrument. Opportunity will be given to demonstrate proficiency in these skills on an individual basis using formal procedure-based assessments. Laparoscopic tissue handling and suturing skills will be practised using animal models.

Surgical Courses (continued)



Neurosurgical Approaches to the Cranial Compartments

This course is aimed at ST3-ST8 level trainees and subspecialty skull base and cerebrovascular Fellows. Teaching of the approaches will be tailored to the specific needs and experience of the individual trainee. This workshop is co-organised by the east and west of Scotland training programs. The program includes complex surgical procedures which cannot be performed by trainees without prior cadaveric exposure. It covers the whole armamentarium of intracranial approaches and provides fundamental insight to very complex procedures. The focus is on enabling trainees to safely approach superficial and deep seated vascular and benign intracranial lesions arising from or being in proximity to the cranial vault or skull base. Trainees will gain a heightened appreciation of the critical structures encountered through these approaches.

Simulation Based Education for Surgeons (SBES)

In this one-day course from the Scottish Surgical Simulation Collaborative (RCSEd and RCPSCG), participants will explore theory and practical tips for using simulation in surgical training. It will be particularly useful for those running local skills clubs, monthly teaching day, boot camp or other courses within the Scottish IST pilot, but applicable in many other settings. It will be immediately followed by the IST trainers update session, and trainers may wish to sign up for both.

Advanced Techniques in Endoscopic Nasal and Sinus Surgery

This course, aimed at consultants and senior trainees in ENT, offers one-to-one training and guidance from an expert faculty. The complexity of this type of surgery is such that our faculty accounts for a considerable proportion of the entire UK experience base for these advanced techniques.

The aim is to educate participants in the anatomical basis of new endoscopic procedures, provide supervised surgical rehearsal, develop instrument handling skills thus fostering safe adoption of new technically exacting techniques for use in hazard rich area of anterior skull base surgery. The course uses short didactic lectures, case scenarios and a stepwise dissection DVD. The mainstay is closely supervised cadaveric dissection.

Major Trauma Emergency Orthopaedic Surgery Programme (MaTEOS)

This two-day course will introduce the principles of damage control resuscitation, prioritising individual extremis in major trauma patients versus multiple/mass casualty situation. We will provide a detailed description of damage control resuscitation - how and why, integrating surgery for haemorrhage control and restoration of perfusion. We will prepare you to deal with: major trauma; groin junctional haemorrhage control; shunting; fasciotomies; debridement; blast and ballistic injury; haemostatic resuscitation; external fixation of all limbs; pelvic packing; team approach and major terrorist incidents.

Conflict Resolution Skills in Healthcare: Bullying, Undermining and Leadership

This one-day workshop explores the legal framework and the impact of undermining and bullying in the medical workplace. It will discuss strategies for dealing with conflict and ways in which to manage colleagues and teams if this behaviour is encountered. Convened by the #LetsRemoveIt lead Alice Hartley with Faculty, Ms Rachel Spearing (Barrister) and Mr Andy McCann (Director) from DNA Definitive.

Thyroid and Parathyroid Masterclass

Using case-based discussions, this intensive one-day workshop provides an opportunity to improve your knowledge of thyroid and parathyroid surgery. Delegates are encouraged to bring details of a complex case they wish to discuss. Supported by BAETS.





Surgical Exams



Intercollegiate MRCS Part A (UK and International)

The purpose of the MRCS examination is to determine that trainees have acquired the knowledge, skills and attributes required for the completion of core training in surgery and, for trainees following the Intercollegiate Surgical Curriculum Programme, to determine their ability to progress to higher specialist training in surgery. Possession of the MRCS diploma is one of the requirements for transition to ST3. Part A of the MRCS is a written examination, divided into two papers. Both papers are taken on the same day and examine generic surgical sciences and applied knowledge, using multiple-choice single best answer. The marks for both papers are combined to give a total mark for Part A.

Intercollegiate MRCS Part B OSCE (UK and International)

The purpose of the MRCS examination is to determine that trainees have acquired the knowledge, skills and attributes required for the completion of core training in surgery and, for trainees following the Intercollegiate Surgical Curriculum Programme, to determine their ability to progress to higher specialist training in surgery. Possession of the MRCS Diploma is one of the requirements for transition to ST3. The Part B objective structured clinical examination (OSCE) integrates basic surgical scientific knowledge and its application to clinical surgery. Its purpose is to build on the test of knowledge in Part A and assess how you are able to integrate knowledge and apply it in clinically appropriate contexts. This is done through a series of stations reflecting elements of day-to-day clinical practice.

Intercollegiate DOHNS Part 1

The purpose of the DOHNS is to test the breadth of knowledge, the clinical and communication skills and the professional attributes considered appropriate by the Colleges for a doctor intending to undertake practice within an otolaryngology department in a non-consultant career grade or trainee position. It is intended to provide a test for those who wish to practise within another medical specialty which interacts with the field of otolaryngology. In particular, it will be relevant for general practitioners with a special interest in otolaryngology. Part 1 is a two-hour multiple-choice written examination (MCQ).

Intercollegiate DOHNS Part 2 - for the award of MRCS (ENT)

The purpose of the DOHNS is to test the breadth of knowledge, the clinical and communication skills and the professional attributes considered appropriate by the Colleges for a doctor intending to undertake practice within an otolaryngology department in a non-consultant career grade or trainee position. It is intended to provide a test for those who wish to practise within another medical specialty which interacts with the field of otolaryngology. In particular, it will be relevant for general practitioners with a special interest in otolaryngology. Part 2 is an objective structured clinical examination (OSCE), lasting approximately three-and-a-half hours.

Diploma in Immediate Medical Care (DIMC)

The examination for the Diploma in Immediate Medical Care is designed to test the knowledge, skills and attitudes of experienced pre-hospital care practitioners. The examination consists of two parts – Part A (written) and Part B (Objective Structured Practical Examination (OSPE)). Candidates sit both parts at the same sitting.

Fellowship in Immediate Medical Care (FIMC)

The Fellowship in Immediate Medical Care (FIMC) is the highest level of formal qualification available for pre-hospital practitioners. It is open to nurses, paramedics and doctors. The examination covers the full spectrum of pre-hospital emergency care, pre-hospital transport and time critical inter-hospital transport. The exam focuses on timely recognition, diagnosis and management of conditions and situations in the pre-hospital environment within all patient age groups ranging from the newborn, infants, children, adults, to the very elderly. Successful candidates are expected to have autonomy and specialist expertise across the spectrum of pre-hospital clinical practice.

Diploma in Urgent Medical Care (DUMC)

The Royal College of Surgeons of Edinburgh's Faculty of Pre-Hospital Care is the first medical Royal College to develop a Diploma in Urgent Medical Care (DipUMC RCSEd) targeted at the many thousands of nurses, doctors and paramedics that provide essential healthcare across the UK when GP surgeries are closed. The new Diploma in Urgent Medical Care exam will focus on the timely recognition, diagnosis and management of conditions and situations in urgent care settings, which can present a variety of challenges to practitioners.

Surgical Exams (continued)



Diploma in Retrieval and Transfer Medicine (DRTM)

The Diploma in Retrieval and Transfer Medicine (DRTM) examination focuses on the retrieval of patients from one healthcare facility to another. Candidates will be expected to be competent in the assessment, management, triage and transfer of adult patients with a range of illnesses and injuries.

FRCSEd Ophthalmology Part B

The purpose of the examination is the assessment of the clinical examination and technique and management. There are three sections including clinical refraction, an objective structured clinical examination (OSCE) with management and a viva section. Failure of any section will require the failed section to be repeated.

FRCSEd Ophthalmology Part C

The main objective of this examination is to ensure that trainees have the appropriate skills and knowledge to take up an independent specialist post at the standard required of a consultant in the UK. The exam consists of three separate components: written paper, structured orals, objective structured clinical examination (OSCE).

Membership in Sport and Exercise Medicine (SEM)

The Diploma in Sport and Exercise Medicine (SEM) is designed to assess knowledge, skills, competence and professional attitudes required of a doctor who wishes to practice as a SEM in the United Kingdom and Ireland. Candidate competency is assessed in two parts – Part 1 is comprised of written papers, and Part 2 is a 12 question exam station of objective structured clinical examination (OSCE). Topics covered include exercise physiology, public health, medical emergencies and drugs in sport. Candidates must have passed Part 1 of the examination to be eligible to apply for Part 2.

Dental Events



Annual Conference for Dental Care Professionals

This event, held annually in March at the College in Edinburgh, aims to strengthen and further develop the dental team. The day offers participants the opportunity to update their knowledge, hear and meet a group of leading experts and the opportunity to network.

Clinical Dental Skills Competition

Gives aspiring surgeons in their final year of UK medical school an opportunity to practise and compete in surgical challenges against their peers from across the UK. Having successfully run the competition since 2011, the College in collaboration with Dentsply Sirona, hosts annual regional heats for the competition in the autumn throughout the UK.



Dental Courses



Preparation for the Diploma in Implant Dentistry

This interactive course prepares candidates for the Diploma in Implant Dentistry of the Royal College of Surgeons of Edinburgh. The different aspects of the examination, together with the standards expected will be discussed by members of the Implant Dentistry Advisory Board of the College. The course will be delivered using lectures, tutorials, and mock OSCE demonstration.

MOrth One Day Membership in Orthodontics Process Course

This is a process course is for those preparing to sit the Membership in Orthodontics exam. It is designed to help improve candidates' performance in the examination via practice sessions with mock vivas in all aspects of the exam (excluding the written component). This includes; two unseen/diagnostic tests; a shortened general viva in orthodontics; a viva in communication and also includes a viva on a submitted treated case using the new case history template (the case must be submitted 1 week prior to the course date). Each viva will have time for brief feedback and discussion with experienced examiners.

Preparation Course for the Tri-Collegiate in Paediatric Dentistry Examination

This is a one-day course to provide preparation guidance to candidates intending to sit the Tri-Collegiate Membership in Paediatric Dentistry Examination.

Core Topic Study Day for DCPs

A full day session to update DCPs in some of the GDC highly recommended topics. Topics we discuss in this lecture and workshop format include: **ethics and complaints** - where we will look in detail at personal development plans and the personal and professional responsibilities of being a registrant with the GDC. Consider the principles of complaints handling in dental environments; **infection control** - we will look at the DoH guidance document HTM 01 05 and explore how to comply with essential quality requirements and best practice. You will receive training in the transmission of infections; **dental radiography** - we will explore legislation IR(ME)R and IRR and what it means to DCPs. Explain the principals of dental radiography and identify quality assurance techniques to support multi professional patient care.

MFDS Lecture

Part 1 of the MFDS is a written examination testing the range of knowledge and understanding that underpins direct patient care. It is a three hour examination consisting of multiple choice questions, with a mix of single best answer and case cluster types. This question paper is designed to test the candidate's knowledge and the deeper understanding and application of that knowledge in a clinical context.

Preparation Course for Part 2 MFDS

A two-day examination preparation course for MFDS Part 2 consisting of interactive lectures and observation of mock OSCE demonstrations. Suitable for those applying to sit for the MFDS Part II examination.

Preparation Course for Diploma in Special Care Dentistry

This one-day course gives guidance to candidates preparing to sit for the Diploma in Special Care Dentistry examination. After attending this course participants will have a better understanding of the format of the examination and the preparation required.

Dental Exams



MFDS Part 1

Part 1 of the MFDS is a written examination testing the range of knowledge and understanding that underpins direct patient care. It is a three hour examination consisting of multiple choice questions of single best answer type (SBA). This question paper is designed to test the candidate's knowledge and the deeper understanding and application of that knowledge in a clinical context.

MFDS Part 2 (MFDS RCSEd)

Part 2 of the MFDS is an objective structured clinical examination (OSCE). It is designed to test the candidate's clinical competence by assessing their communication skills and their knowledge, understanding and management of a range of common conditions. The examination normally lasts around two hours, and consists of 10 stations which are examined, and may include a number of rest stations. At the examination stations the candidate will be expected to manage the patient's concerns, communicate with the patient and use the clinical material available to them to plan treatment. The patients are actors.

Membership in Orthodontics (M Orth RCSEd)

The Membership Examination in the Specialty of Orthodontics of RCSEd, which has five components, is a summative assessment of core knowledge and competence in the field of orthodontics inclusive of aspects of communication, intended to test a candidate's competency at a level expected of a specialist practitioner. To enter the examination, a candidate must have an acceptable primary dental qualification and have completed three years of full-time training in orthodontics (or part-time equivalent).

Membership in Endodontics (M Endo RCSEd)

The Membership Examination in the Specialty of Endodontics is available in the UK and internationally as part of conjoint arrangements with our partner universities.

The examination in the Specialty of Endodontics of RCSEd, which has two components, is a summative assessment of core knowledge and competence in the field of endodontics intended to test the candidate's competency at a level expected of a specialist practitioner. To enter the examination, a candidate must have an acceptable primary dental qualification and have completed three years of full-time training in endodontics (or part-time equivalent).

Membership in Periodontics (M Perio RCSEd)

The Membership Examination in the Specialty of Periodontics is available in the UK and internationally as part of conjoint arrangements with our partner universities.

The examination in the Specialty of Periodontics of RCSEd, which has two components, is a summative assessment of core knowledge and competence in the field of periodontics intended to test the candidate's competency at a level expected of a specialist practitioner. To enter the examination, a candidate must have an acceptable primary dental qualification and have completed three years of full-time training in periodontics (or part-time equivalent).

Dental Exams (continued)



Memberships in Prosthodontics (M Pros RCSEd)

The Membership Examination in the Specialty of Prosthodontics is available in the UK and internationally as part of conjoint arrangements with our partner universities.

The examination in the Specialty of Prosthodontics of RCSEd, which has two components, is a summative assessment of core knowledge and competence in the field of prosthodontics intended to test the candidate's competency at a level expected of a specialist practitioner. To enter the examination, a candidate must have an acceptable primary dental qualification and have completed three years of full-time training in prosthodontics (or part-time equivalent).

Membership in Advanced General Dental Surgery (MAGDS RCSEd)

This is a new examination for advanced general dental practitioners. Many of the key learning outcomes are aligned to those laid down by the NHS documents for commissioning specialist dentistry at Level 2. The examination was designed after extensive consultation with GDPs and is designed to recognise an advanced level of attainment. The examination, which has three components, is clinically focused and is designed to test the candidate's applied clinical knowledge, clinical judgement and problem solving skills relevant to the practice of general dental surgery at an advanced level. It is open to GDPs with five or more years of post-registration experience in the field of general dental surgery.

Membership in Oral & Maxillofacial Surgery (MOMS RCSEd)

This examination is held internationally and is intended to test the candidate's knowledge and understanding, supporting their clinical competence, at a level expected of a trainee who has completed a minimum of 30 months in a full-time three year specialist training programme, or equivalent at the time of application. Candidates must hold a BDS or equivalent and have completed a minimum of three years maxillofacial specialist training in a recognised institution at the time of the examination. The Learning Outcomes are available online. The examination consists of two parts, a knowledge examination in the form of a multiple choice paper of single best answer (SBA) format and a structured oral examination on eight clinical scenarios with clinical records related to treatment planning and patient care.

Membership in Primary Dental Care (MPDC RCSEd)

The Membership Examination in Primary Dental Care is only available in the UK as part of a conjoint arrangement with our partner universities. There is no longer a route for direct applicants in the UK.

The examination assesses the skills and applied knowledge of the general dental practitioner who has been practicing for five years or more. The examination is clinically focused and is designed to test the candidate's applied clinical knowledge, clinical judgement and problem solving skills relevant to the practice of general dental surgery. There are two components, one a written paper and one a structured oral examination on simulated cases. It is open to GDPs with five or more years of post-registration experience in the field of general dental surgery.

Tri-Collegiate Membership in Oral Surgery (M Oral Surgery RCSEd)

This examination is intended to test the candidates' knowledge and understanding relevant to the practice of a specialist in oral surgery. The learning outcomes are those laid down in the specialty training curriculum, oral surgery from the specialty advisory committee for oral surgery and agreed by the General Dental Council. Candidates must provide certified evidence of possession of a primary dental qualification that is acceptable to the Colleges and may apply for entry to the examination having completed 30 months training by the date of the examination. The Examination consists of a written examination consisting of multiple choice single best answer (SBA) questions, an objective structured clinical examination and unseen cases and associated oral examination.

Tri-Collegiate Membership in Paediatric Dentistry (M Paed Dent RCSEd)

The Membership Examination in the Specialty of paediatric dentistry, which has four components, is a summative assessment of core knowledge and competence in the field of Paediatric Dentistry, intended to test the candidate's competency at a level expected of a specialist practitioner. To enter the examination, a candidate must have an acceptable primary dental qualification and have completed a minimum of 30 months of a three year full-time specialty training appointment (or part-time equivalent) or in specialty training deemed acceptable by the Colleges.

Tri-Collegiate Membership in Special Care Dentistry (M Spec Care Dent RCSEd)

Intended to test the candidate's knowledge, understanding, skills, and attitudes relevant to the practice of a specialist in special care dentistry. The examination consists of five components; a written examination, structured oral problem-solving examination, oral examination based on two simulated cases, communication skills test based on two communication scenarios, and structured oral examination based on a submitted portfolio of experience which includes two documented clinical case histories.

Diploma in Implant Dentistry (Dip Imp Dent RCSEd)

This examination in implant dentistry of RCSEd, which has three components, is an assessment of core knowledge and competence in the field of implant dentistry, intended to test a candidate's competency at a level expected of a general practitioner with a particular interest in Implant dentistry and will include aspects of minor augmentation. The diploma is not intended to test a candidate's competency or detailed knowledge of the more advanced procedures such as major bone grafting (block onlay grafting), sinus grafting or full arch prosthodontic rehabilitation. The examination is open to GDPs who have been working as a qualified dentist for at least three years, and who are able to submit a logbook record of implant-related activity gathered over at least 12 consecutive months.

Dental Exams (continued)



Diploma in Special Care Dentistry (D Spec Care Dent. RCSEd)

This examination is designed to test the candidate's ability at the level expected of a practising dentist with a particular interest in special care dentistry; it is not intended to test to the level of a specialist in SCD. To enter for the examination, candidates must have an acceptable primary dental qualification and have been working as a qualified dentist for at least two years, including the completion of a minimum of 12 months full-time (or equivalent) postgraduate experience in special care dentistry. Candidates are currently required to submit a logbook record of clinical experience in special care dentistry.

Diploma in Clinical Dental Technology (Dip CDT RCSEd)

The examination, which consists of two components, is open to candidates who have completed the necessary training at a school for dental care professionals or equivalent establishment, where the course has been approved by the General Dental Council. Candidates will be required to submit a clinical logbook record of clinical work undertaken during their course. The examination is designed to test the ability of candidates to treat patients independently, or as delegated by a registered dentist. The range of skills to be tested in the examination includes only those which are specified in the learning outcomes for clinical dental technology as published by the General Dental Council. Award of the diploma entitles the holder to apply for registration with the GDC as a clinical dental technologist.

Diploma in Orthodontic Therapy (Dip Orth Ther RCSEd)

The examination, which consists of three components, is open to candidates who have completed the necessary training at a school for dental care professionals or equivalent establishment, where the course has been approved by the General Dental Council. Candidates will also be required to submit a clinical logbook record of clinical work undertaken during their course. The examination is designed to test the ability of candidates to treat patients as delegated by a registered dentist. The range of skills to be tested in the examination includes only those which are specified in the learning outcomes for orthodontic therapy published by the General Dental Council. Award of the diploma entitles the holder to apply for registration with the GDC as an orthodontic therapist.

Diploma in Paediatric Dentistry (Dip Paed Dent (DT) RCSEd)

This examination is only open to applicants who have undertaken and completed the online course for the Diploma in Paediatric Dentistry for dental therapists and graduates in oral health sciences of RCSEd. (Course details and future intake dates for the course may be requested from DT@rcsed.ac.uk) This is an exciting and innovative programme which is the first of its kind to be offered by a Royal College. Applications are invited from dental therapists and graduates in oral health sciences who are currently registered with the General Dental Council, and have a minimum of two years post-qualification clinical experience. Applications from international candidates who are registered with their national governing body for dentistry may also be considered. The examination is a summative assessment in the field of paediatric dentistry. It is intended to test the candidate's knowledge, understanding, skills, and attitude relevant to the practice of Paediatric Dentistry to allow the candidate to demonstrate a level of competence in the diagnosis, treatment planning and delivery within the scope of practice of a dental therapist.

Fellowship in Dental Surgery by Assessment (FDS RCSEd)

The Fellowship in Dental Surgery by Assessment denotes a registered dental surgeon who has demonstrated sustained commitment to high clinical standards and to the profession of dentistry for a period of normally not less than two years after achieving an appropriate postgraduate qualification recognised by the Royal College of Surgeons of Edinburgh. This examination assesses the clinical skills and knowledge of an experienced dental practitioner or specialist practitioner who demonstrates excellence in all aspects of their work in the practice of dentistry. There are two parts, namely the provision of two satisfactory referee reports, and a Fellowship portfolio submitted for assessment.

Fellowship in Dental Surgery (Conjoint USA) in Oral-Medicine (FDS RCSEd)

This examination is a conjoint with the Part B of the American Board of Oral Medicine, and which consists of four components. This is only open to trainees who are registered to take the American Board of Oral Medicine examination. Candidates may sit the Conjoint Examination for the Fellowship in Dental Surgery 18 months after successful completion of the specialty training qualification. The award of the Fellowship is dependent on the candidate providing evidence of a full two years' post-specialty training, which should normally, but not exclusively, be undertaken in an institution approved by RCSEd.

International Membership in Special Care Dentistry (Int M Spec Care Dent)

This qualification is only open to international candidates and cannot be undertaken in the UK. Aimed at candidates at the level of completion of three years of specialist training, allowing the candidate to demonstrate a core knowledge of special care dentistry. Although the learning outcomes for the examination are drawn from the curriculum specified by the UK Specialist Advisory Committee for SCD, its purpose is to test candidates on experience and knowledge relevant to the practice of special care dentistry in the country where the candidate has trained and/or is working, at a specialist level.

Internationally Renowned

Activities

Since 1505, the spirit of innovation has been a central tenet in all our College activities. The College is constantly adapting and evolving in response to the changing needs of our Fellows, Members and Affiliates. As society moves forward, so must our decisions and activities be shaped by the views and needs of our membership and our patients and informed and enabled by advancements in technology.

To support our membership with their training and career development, we offer a variety of platforms for learning, including free access to the high quality online anatomy resource, Acland Anatomy, as well as regular specialty specific webinars, online video lectures and more. By joining our College, you also gain access to our College Library, which holds works dating back to the 1400s and provides access to over 30,000 books and journals.

To inspire and motivate the next generation of surgeons and dentists, we are the first UK surgical college to have run national skills competitions for undergraduates, and our award-winning Surgeons' Hall Museums provides all our membership free access to one of the largest and most historic collections of surgical pathology in the world.



Over the last 20 years, we have committed over £7 million to support over 700 individuals working in university departments and hospitals throughout the UK and internationally through trainee bursaries, travelling fellowships and research grants, enhancing the College's surgical research aims and ambition.

In our commitment to patient safety, we are the College that developed the Non-Technical Skills for Surgeons (NOTSS) programme, recognising the importance of cognitive and interpersonal aspects to enhance the performance of the surgical team and the outcomes for our patients. We are also the College committed to eradicating bullying and undermining in the workplace through our international #LetsRemoveIt campaign.



The College offers fantastic support to juniors, and has an outlook that trainees are the way of the future. They are receptive to change and always willing to listen. As a junior, I wanted to set up a foundation surgical society and this was fully supported by the College and its team. Everyone has always been extremely approachable and friendly, nothing has been too much trouble. RCSEd provides an extremely supportive network for both consultants and trainees. Alongside skills days, anatomy workshops and exam preparation courses, the College provides research, training and networking events. It is an all-inclusive College for all stages of training. RCSEd provides the clinical, academic and personal support required to be a surgeon. It supports a multitude of courses for all specialities and abilities, and brings together surgical professionals via a variety of modes.

Katherine Hurst
Academic Clinical Fellow in the Oxford Deanery with an interest in
Vascular Surgery and RCSEd Trainees' Committee Member.

Learning Resources



Webinars and Online Learning

We offer our membership access to Acland Anatomy and a variety of online webinars on a variety of topics. In addition, our College offers distance-learning MSc and ChM postgraduate e-learning programmes.

Acland Anatomy

We are pleased to offer our membership free access to the high quality online anatomy resource, Acland Anatomy. This dynamic online training platform is an excellent learning tool for trainees preparing for their membership examinations, as well as for our Fellows as a very useful practical revision resource and powerful training and teaching tool.

Surgeons' News

Surgeons' News is the award-winning magazine for the entire membership of the College. Published quarterly, it features comment and opinion from leading professionals, plus reviews and reports on subjects relevant to all career levels.

Dental Update

RCSEd has recently secured free online access for our membership to the renowned journal Dental Update. Dental Update is the leading peer-reviewed clinical journal for the dentist in general practice.

Library Services

Full current and historical information services via our extensive library and archive resources, including a growing e-book platform.

Helping you Succeed

With over 500 years of education, assessment and advancement of the profession of surgery, we pride ourselves on our exacting standards and the positive difference they make to patient outcomes and care.

We are extremely proud of our commitment to excellence in examinations and education and our expertise is in demand by other colleges. We have a strong team of highly experienced practitioners who deliver our examinations in the UK and around the world, as well as a large educational faculty who develop and run exam preparation courses and professional development activities at a wide variety of locations worldwide. In addition, we have made a significant investment in quality with in-house educationalists and psychometricians who provide rigour, expertise and quality assurance to the development of our courses and examinations.

As the world becomes increasingly digital, we also offer online, distance learning, postgraduate programmes for our trainees, including the groundbreaking and award-winning Edinburgh Surgical Sciences Qualification, in partnership with the University of Edinburgh. With our Faculty of Pre-Hospital Care (FPHC), we also deliver online diploma programmes in Remote and Offshore Medicine as well as Mountain Medicine. Our online portfolio will continue to expand as we explore the needs of our membership and workforce.



To recognise and support surgical trainers and maintain training excellence, the College is home to the UK's only Faculty of Surgical Trainers (FST), responsible for the first ever set of competencies and standards for surgeons who provide training, which have been adopted in the UK and countries around the world. We have also established a Faculty of Dental Trainers (FDT) to promote the critical role of trainers across all areas of dentistry.

We are forever striving to remain at the forefront of our evolving professions. For that reason the knowledge and skills that we need are constantly debated and discussed, and the curriculum continuously adapted and amended to ensure our training and education modules are relevant to the needs of our members and society.

Continual Professional Development (CPD)



The Royal College of Surgeons of Edinburgh is committed to supporting its membership by providing guidance and resources for lifelong surgical professional development, including continuing professional development (CPD).

CPD is the engagement in a continuing learning process, outside formal undergraduate and postgraduate training, that enables individual doctors to maintain and improve standards of medical practice through the development of knowledge, skills, attitudes and behaviour.

Revalidation

All surgeons in non-training grades who have a licence to practise and wish to remain on the GMC register must participate in CPD activities to meet the requirements of revalidation. The GMC will require documented proof of CPD as an essential part of successful appraisal and revalidation.

Individual responsibility

It is the responsibility of individual surgeons to keep abreast of new developments that apply to their roles and practice and ensure that they undertake a range of CPD activities that reflect the needs of their practice and their own learning. For a CPD scheme to be effective it should be flexible and largely based on self-evaluation.



The College's commitment to research and grants is crucial and long-standing. Through partners, Fellowships and travel grants, our Members and Fellows are able to access important funding opportunities that ultimately deliver great educational and research experiences. Our portfolio of opportunities is growing and with it the chance for our membership to make an ever greater impact on their patients and their own professional development.

Professor Steve Wigmore
Chair, RCSEd Research and
Grants Committee



Research and Grants



One of the most important investments the College makes every year is in the next generation of surgical researchers and those seeking new educational experiences. Over the years, surgical research has been overlooked in the quest to provide better treatment for medical conditions, despite being at the heart of so many diseases, such as cancer. For this reason, the College has invested millions in areas as varied as small bursaries to major partnerships.

Research is not an abstract exercise, but a core part of making surgeons more curious and engaged with the conditions they are trying to treat. There is work to be done in acquiring more clinical time to allow this to happen, but the College plays a vital role in allowing surgeons the time and support to develop their clinical research skills.

In addition to clinical research, we support the education of surgeons throughout their professional lives. From funding attendance at conferences to undertaking projects in the developing world, the range of opportunities afforded is broad and exciting. The College is at the forefront of surgical innovation and prides itself on allowing our membership to thrive by supporting them across specialities, regardless of borders.

The future of our research and grants programme is exciting. Partnership working is allowing us to undertake more ambitious work that will have a national impact in the longer term. We are now looking to work with major medical research charities to grow surgical research from the periphery and place it at the heart of medical research agendas nationwide. This innovative approach to working together is in all of our interests and will leave a lasting legacy of treatments that will transform lives.

Research Fellowships

Support offered by our research fellowships usually cover one year's salary to allow capacity for research with an impact on the current and future surgical environment. The College's priority areas include surgical and dental translational research; surgical and dental health services research; and cancer research of demonstrable direct clinical relevance to the management of solid tumours.

Travelling Fellowships

As part of the College's commitment as a globally relevant organisation, we offer a variety of travelling fellowships which allow our membership to attend international conferences, training and educational events to generate knowledge exchange and build positive working relationships for the future.

Grants

The College offers a number of grants to Fellows and Members, including small research support grants, grants for travel such as the Ethicon Foundation Short Term Clinical Visit Grants and Ethicon Foundation Fund Travel Grants and ophthalmology grants.

Medals

The Syme Medal is awarded for published work with an impact on future research or clinical practice. The Hunter Doig Medal is awarded to a female Fellow or Member of the Royal College of Surgeons of Edinburgh who demonstrates career potential and ambition.



Our Unified Campus

We offer cutting-edge hospitality, operating multiple venues in Edinburgh's iconic old town at Surgeons Quarter. Visitors can meet, celebrate and stay in one Edinburgh city centre location. While we continue to lead the way in surgical and dental practice, we are now applying the same world-class standard of care in hospitality.

We are an independent charitable organisation, which allows us to offer a more flexible, personalised experience. This is exemplified by the importance we place on attention to detail – something that can be traced back through our history books – meaning we understand how delivering on the little things is just as important as the big things. Whether you have come to Surgeons Quarter to entertain important guests, to stage an event, treat yourself to a well-earned weekend away or to sample Scotland's renowned local produce, you can be assured that each and every detail has been taken care of.

Beyond making your visit as comfortable and enjoyable as we can, there is a higher purpose to what we do. We share the success of Surgeons Quarter in the development and availability of surgery and dental surgery around the world. It is our way of honouring the progress we have made through the centuries, and ensuring further progress is made in the future. So while we will make you feel great during your stay, you will feel better still, knowing you are helping make a difference to the lives of people who don't ordinarily have access to medical and dental surgery.



The Edinburgh campus was expanded in 2014 by our second site in Birmingham and in 2018 by the opening of our International Office in Kuala Lumpur, Malaysia.

Venues

From five to 500, we can accommodate conference delegates in complete comfort. Choose from a variety of venues and break-out rooms steeped in history yet brimming with technology. Whether you decide on the King Khalid Building with its tiered auditorium, the grandeur of the Playfair Building, the stature of the Quincentenary Conference Centre or the splendour of the Prince Philip Building, you will enjoy an event that is as memorable as it is successful. Our venues are also stunning settings for weddings, private dining and parties.

tenhillplace.com

Ten Hill Place Hotel

Our hotel offers 129 bedrooms, an award-winning head chef and has been awarded the Gold Award in Green Tourism. Modern luxuries meet ancient history in this oasis of calm, close to the vibrancy of the city centre. Whether it is business, pleasure or leisure, our four-star, award-winning hotel will make your stay perfect.

Café 1505

Our café is situated next to the College on Nicolson Street. A warm welcoming environment awaits you, with a delicious choice of healthy light bites and meals, followed by homemade cakes and pastries created by our in-house team. We serve organic, Fairtrade equal exchange coffee, a choice of teas, wine, beer and cider. All profits from the café go to Access to Surgery (A2S).

surgeonsquarter.com

For booking details and information
on all our exams, courses and
events, visit

www.rcsed.ac.uk



By being a Member of RCSEd, I am part of a group of people who not only share aspirations to improve the quality of care they deliver to their patients, but also improve healthcare from a surgical perspective for all patients. I want to be part of this forward-thinking, motivated group so that the care I deliver to my patients, is outstanding and as such I am involved with the RCSEd activities.

Olivia McBride
ST4 in Vascular Surgery,
South East Scotland

The Inspired Choice

The Royal College of Surgeons of Edinburgh (RCSEd)

Nicolson Street, Edinburgh EH8 9DW, UK.

T +44 (0) 131 527 1600.

E mail@rcsed.ac.uk

RCSEd Birmingham

Birmingham Regional Centre, 85-89 Colmore Row,

Birmingham B3 2BB, UK.

T +44 (0) 121 647 1560

E birmingham@rcsed.ac.uk

RCSEd Malaysia

The Advanced Surgical Skills Centre

UKM Medical Centre Jalan Yaacob Latif Bandar Tun, Razak,

56000 Cheras, Kuala Lumpur, Malaysia.

T +60 39 145 4926

E malaysia@rcsed.ac.uk



@RCSEd

www.rcsed.ac.uk