

PATIENT SAFETY GROUP UPDATE

The RCSEd strongly supports the NHS Patient Safety Strategy, which puts continuous safety improvement at the forefront of NHS practice. NHS England's Dr Aidan Fowler summarises the report



Insight, Involvement and Improvement

NHS England and NHS Improvement recently published the first ever national patient safety strategy to support NHS staff and organisations in England to ensure wherever NHS care is delivered it is done so in the safest way possible.

The strategy embraces the principle of continuous safety improvement, underpinned by a safety culture and effective safety systems.

The document is a statement of collective intent to improve safety by recognising that to make progress the NHS must significantly improve the way it learns, supports staff and involves patients.

There are three strategic aims:

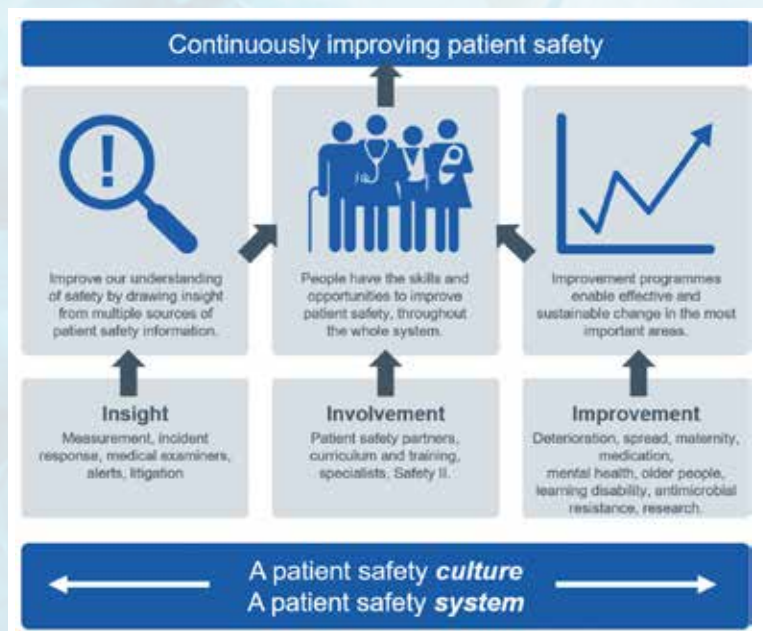
- Improving understanding of safety by drawing intelligence from multiple sources of patient safety information (Insight), including through creating a new incident reporting and management system, improving the response to and learning from incidents, introducing the new Medical Examiner system and improving learning from litigation claims.
- Equipping patients, staff and partners with skills and opportunities to improve patient safety throughout the whole system (Involvement), including through designating patient safety specialists in each organisation, creating the first patient safety syllabus for the whole NHS and fundamentally involving patients in patient safety.



Dr Aidan Fowler
National Director for Patient Safety
NHS England

- Designing and supporting programmes that deliver effective and sustainable change in the most important areas (Improvement), including medication safety, mental health safety, maternal and neonatal safety, the care of older people and the care of people with learning disabilities, as well as the wider field of safety incidents, including the greater use of safe design, such as for reducing never events.

You can download a copy of the strategy at bit.ly/PatientSafetyStrategy



The Patient Safety Group exists to ensure that RCSEd's core professional standards, training and education activities are focused on continuously improving patient safety and reducing harm. For details visit rcsed.ac.uk/patientsafetygroup